

GENERAL NOTES

1. PROVIDE AND INSTALL ALL WORK AND MATERIALS AS REQUIRED BY THE DRAWINGS AND SPECIFICATIONS - IN FULL ACCORDANCE WITH ALL CODES AND ORDINANCES.
2. INFORM ARCHITECT OF ANY DIMENSIONAL DISCREPANCIES PRIOR TO CONSTRUCTION.
3. INFORM ARCHITECT OF ANY EQUIPMENT, PRODUCT, OR MATERIAL SUBSTITUTES PRIOR TO MECHANICAL AND INSTALLATION.
4. REFER TO STRUCTURAL DRAWINGS FOR ALL STRUCTURAL SIZES, SHAPES AND DESIGN INFORMATION.
5. DESIGNED TRASH AND RECYCLING AREA SHALL BE PROVIDED WITHIN THE BUILDING.
6. PROVIDE MOISTURE RESISTANT GYP. BD. AT ALL TOILET ROOM WET WALLS OR WHERE CERAMIC TILE OR F.P.P. IS INDICATED. THIS INCLUDES ALL JANITOR CLOSETS.
7. ARCHITECT TO APPROVE LOCATION OF EMERGENCY EXIT SIGNS, SPRINKLER HEADS, AND MECHANICAL GRILLES PRIOR TO INSTALLATION.
8. ALL GLAZING SUBJECT TO HUMAN IMPACT SHALL BE DESIGNED AND SUPPORTED TO WITHSTAND LOADS IMPOSED (IBC 2009).
9. INTERIOR FINISHES SHALL COMPLY WITH THE FLAME SPREAD CLASSIFICATIONS AS REQUIRED.
10. EXIT SIGNS SHALL BE PROVIDED AS REQUIRED. SEE ELECTRICAL DRAWINGS.
11. FIRE EXTINGUISHERS SHALL BE PROVIDED. VERIFY LOCATIONS WITH LOCAL FIRE DEPARTMENT.
12. SPRINKLER SYSTEM SHALL BE E.S.F.R. INSTALLED IN ACCORDANCE WITH N.F.P.A. NO. 13 & F.M. GLOBAL. SHOP DRAWINGS FOR FIRE PROTECTION SYSTEMS SHALL BE SUBMITTED BY FIRE PROTECTION SUBCONTRACTOR TO RYAN AND THE FIRE MARSHAL FOR APPROVAL.

MATERIAL INDICATIONS

	EARTH/COMPACT FILL		STEEL/ALUMINUM
	GRAVEL/POROUS FILL		BATT OR SEMI RIGID INSULATION
	CONCRETE		RIGID INSULATION
	SAND/MORTAR/ PLASTER		FIRE SAFETY
	COMMON FACE BRICK		FINISH WOOD
	CONCRETE MASONRY UNIT		PLYWOOD
	STONE		ROUGH WOOD
	MARBLE/GRANITE		BLOCKING OR SHIM

LOCATION MAP

B68

B69

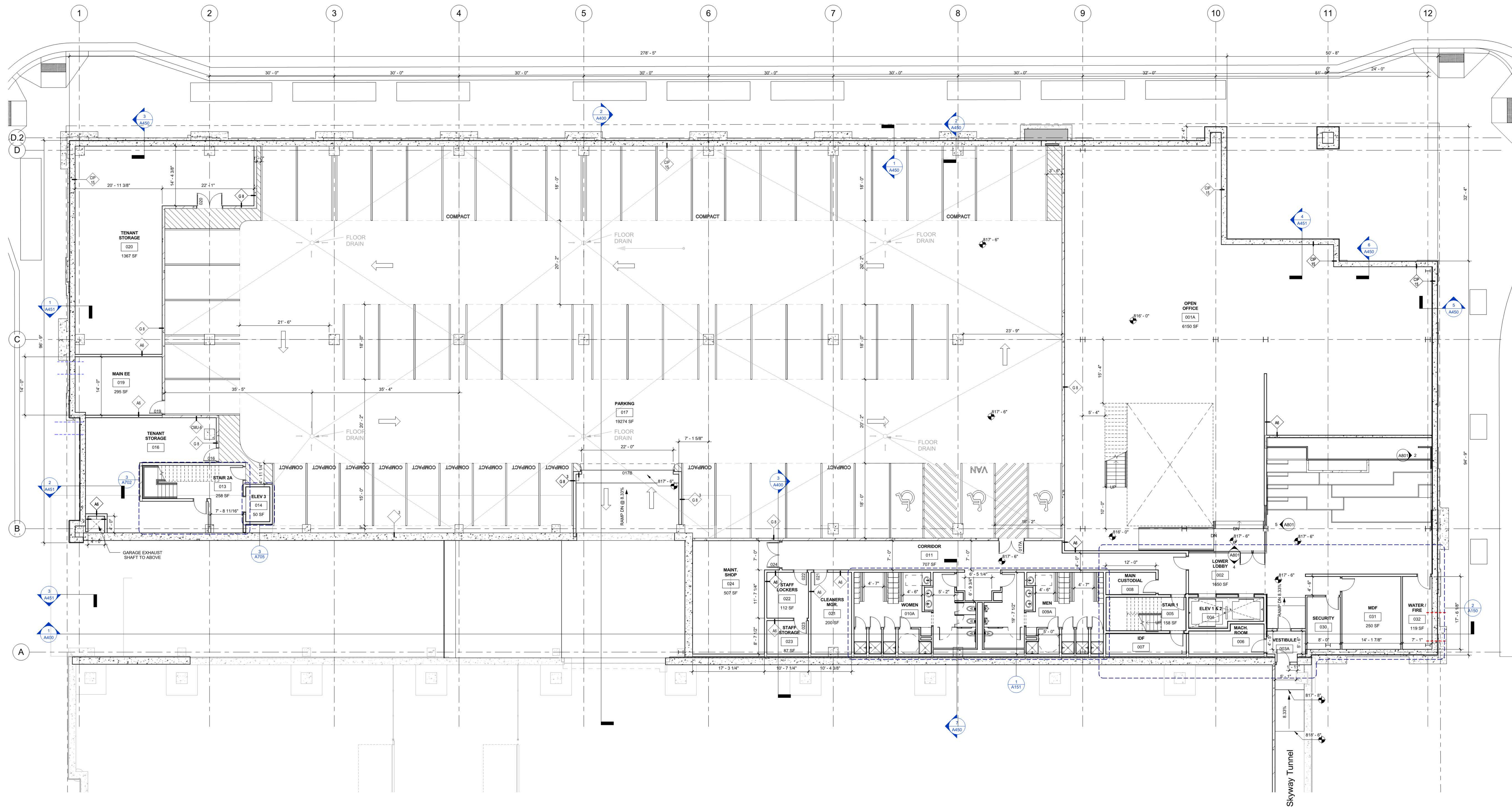
B75

B75

PRELIMINARY - NOT FOR CONSTRUCTION

GENERAL NOTES

- REFER TO STRUCTURAL DRAWINGS FOR SLAB ON GRADE CONSTRUCTION, CONTROL AND ISOLATION JOINTS.
- COORDINATE UNDERGROUND AND UNDER SLAB UTILITIES WITH RELEVANT TRADES PRIOR TO SLAB POUR. COORDINATE ALL SLEEVES THROUGHOUT FOOTING AND FOUNDATION W/ STRUCTURAL ENGINEER.
- PROVIDE FIRE EXTINGUISHERS OF SIZE AND TYPE AND LOCATION AS REQUIRED BY THE FIRE MARSHALL.
- DIMENSIONS ARE TO FACE OF MASONRY OR FACE OF GYP. BD. U.N.O.
- SEE SHEET A002 FOR WALL TYPE INFORMATION.
- SEE SHEET A003 FOR PARTITION TYPE INFORMATION.
- ALL WALLS TO ROOF DECK TO BE CONSTRUCTED TO ACCOMMODATE DEFLECTION OF ROOF STRUCTURE.
- REFER TO STRUCTURAL ENGINEERING DRAWINGS FOR ADDITIONAL INFORMATION PERTAINING TO STRUCTURAL COMPONENT SIZES, LOCATIONS, CONFIGURATIONS, AND CAPACITIES.
- ALL THRESHOLDS TO BE 1/2" HIGH MAX PER ADA.
- PROVIDE MOISTURE RESISTANT GYP. BD. ON TOILET ROOM WET WALL AND ADJACENT TO JANITOR SINK.
- PROVIDE CONTROL JOINTS IN GYP. BD. AS RECOMMENDED BY MANUFACTURER.
- STAIR SUPPLIER SHALL BE RESPONSIBLE FOR CODE COMPLIANCE AND STRUCTURAL INTEGRITY FOR ALL MATERIALS FURNISHED.
- NEW PARTITIONS TO BE AS NOTED AND DESCRIBED AT WALL PARTITION TYPES.
- SUBCONTRACTOR TO VERIFY DIMENSIONS AND CONDITIONS SHOWN ON THESE DRAWINGS ANY OMISSIONS, DISCREPANCIES, OR CONFLICTS MUST BE REPORTED TO THE DESIGN BUILD IMMEDIATELY.
- DIMENSIONS ARE AT 3'-0" ABOVE FINISHED FLOOR AND FROM FACE OF FINISHED PARTITION.
- DRAWINGS SHOULD NOT BE SCALED - DIMENSIONS GOVERN. LARGE SCALE DRAWINGS GOVERN OVER SMALL SCALE DRAWINGS.
- THE TYPICAL DIMENSION FROM THE HINGE SIDE OF A DOOR OPENING TO THE FACE OF ADJACENT PERPENDICULAR WALL IS 3", UNLESS NOTED OTHERWISE.
- WHEREVER A PENETRATION OCCURS IN A FIRE-RATED ENCLOSURE SUCH AS WALLS OR SLAB, THE SPACE AROUND SUCH PENETRATION SHALL NOT EXCEED 1/2" AND SHALL BE PACKED WITH SOLID MINERAL WOOL (OR EQUAL) AND CLOSED OFF WITH A TIGHT FITTING ESCUTCHEON PLATE (OR EQUAL) ON BOTH SIDES OF THE RATED ENCLOSURE IN ORDER TO ENSURE A FULL FIRE RATING IN COMPLIANCE WITH CODE.
- ANY DOOR CLOSER SHALL BE MOUNTED ON THE TENANT SIDE OF ENTRY DOORS.
- PROVIDE ROD AND SHELF AT COAT CLOSETS.



1 0 - BASEMENT
A100 1/8" = 1'-0"

PRELIMINARY - NOT FOR CONSTRUCTION



RYAN A+E, INC.
50 South Tenth Street, Suite 300
Minneapolis, MN 55403-2012
612-492-4000 tel
612-492-3000 fax

WWW.RYANCOMPANIES.COM

PROJECT NAME

BLOCK 68 - NORTH OFFICE BUILDING

LOCATION
513 3RD STREET SOUTH
MINNEAPOLIS, MN

SCHEMATIC DESIGN SET

08/11/15

I hereby certify that this plan, specification, or report was prepared by me or under my direct supervision and that I am a duly Registered Architect under the laws of the State of Minnesota.

ISSUE RECORD		
REV #	DATE	DESCRIPTION

DRAWN BY
Author
CHECKED BY
Checker
JOB NO.
700-513
DATE
11.20.2015

NORTH OFFICE BUILDING

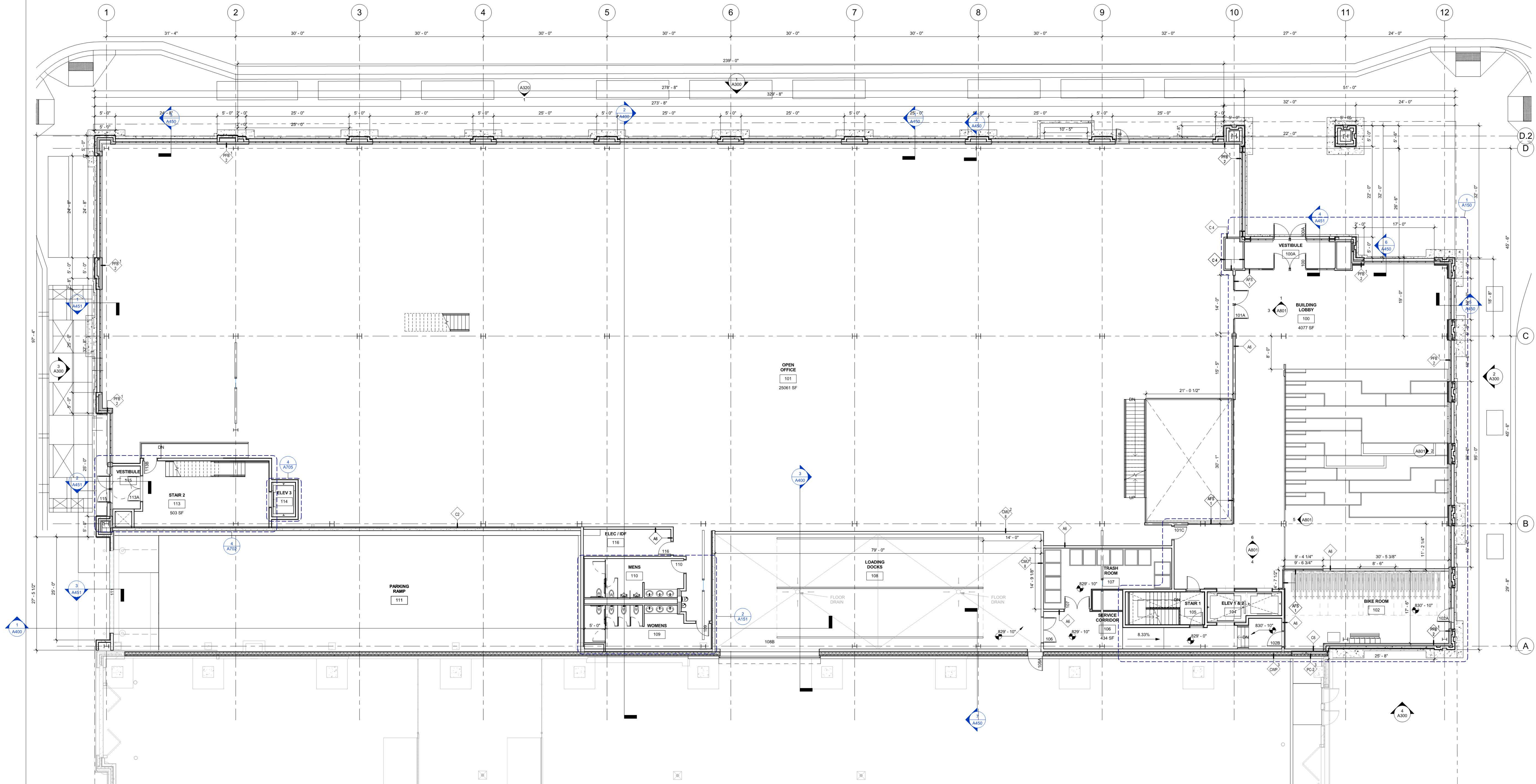
SHEET TITLE
BASEMENT FLOOR PLAN

SHEET NO.
B68:NO:A100

© 2015 RYAN A+E, INC.

GENERAL NOTES

- REFER TO STRUCTURAL DRAWINGS FOR SLAB ON GRADE CONSTRUCTION, CONTROL AND ISOLATION JOINTS.
- COORDINATE UNDERGROUND AND UNDER SLAB UTILITIES WITH RELEVANT TRADES PRIOR TO SLAB POUR. COORDINATE ALL SLEEVES THROUGH/UNDER FOOTING AND FOUNDATION W/ STRUCTURAL ENGINEER.
- PROVIDE FIRE EXTINGUISHERS OF SIZE AND TYPE AND LOCATION AS REQUIRED BY THE FIRE MARSHALL.
- DIMENSIONS ARE TO FACE OF MASONRY OR FACE OF GYP. BD. U.N.O.
- SEE SHEET A002 FOR WALL TYPE INFORMATION.
- SEE SHEET A003 FOR PARTITION TYPE INFORMATION.
- ALL WALLS TO ROOF DECK TO BE CONSTRUCTED TO ACCOMMODATE DEFLECTION OF ROOF STRUCTURE.
- REFER TO STRUCTURAL ENGINEERING DRAWINGS FOR ADDITIONAL INFORMATION PERTAINING TO STRUCTURAL COMPONENT SIZES, LOCATIONS, CONFIGURATIONS, AND CAPACITIES.
- ALL THRESHOLDS TO BE 1/2" HIGH MAX PER ADA.
- PROVIDE MOISTURE RESISTANT GYP. BD. ON TOILET ROOM WET WALL AND ADJACENT TO JANITOR SINK.
- PROVIDE CONTROL JOINTS IN GYP. BD. AS RECOMMENDED BY MANUFACTURER.
- STAIR SUPPLIER SHALL BE RESPONSIBLE FOR CODE COMPLIANCE AND STRUCTURAL INTEGRITY FOR ALL MATERIALS FURNISHED.
- NEW PARTITIONS TO BE AS NOTED AND DESCRIBED AT WALL PARTITION TYPES.
- SUBCONTRACTOR TO VERIFY DIMENSIONS AND CONDITIONS SHOWN ON THESE DRAWINGS. ANY OMISSIONS, DISCREPANCIES, OR CONFLICTS MUST BE REPORTED TO THE DESIGN BUILD IMMEDIATELY.
- DIMENSIONS ARE AT 3'-0" ABOVE FINISHED FLOOR AND FROM FACE OF FINISHED PARTITION.
- DRAWINGS SHOULD NOT BE SCALED - DIMENSIONS GOVERN. LARGE SCALE DRAWINGS GOVERN OVER SMALL SCALE DRAWINGS.
- THE TYPICAL DIMENSION FROM THE HINGE SIDE OF A DOOR OPENING TO THE FACE OF ADJACENT PERPENDICULAR WALL IS 3", UNLESS NOTED OTHERWISE.
- WHEREVER A PENETRATION OCCURS IN A FIRE-RATED ENCLOSURE SUCH AS WALLS OR SLAB, THE SPACE AROUND SUCH PENETRATION SHALL NOT EXCEED 1/2" AND SHALL BE PACKED WITH SOLID MINERAL WOOL OR EQUAL AND CLOSED OFF WITH A TIGHT FITTING ESCUTCHEON PLATE (OR EQUAL) ON BOTH SIDES OF THE RATED ENCLOSURE IN ORDER TO ENSURE A FULL FIRE RATING IN COMPLIANCE WITH CODE.
- ANY DOOR CLOSER SHALL BE MOUNTED ON THE TENANT SIDE OF ENTRY DOORS.
- PROVIDE ROD AND SHELF AT COAT CLOSETS.



1 - LEVEL 1 PLAN
A101 1/8" = 1'-0"

PRELIMINARY - NOT FOR CONSTRUCTION



RYAN A+E, INC.
50 South Tenth Street, Suite 300
Minneapolis, MN 55403-2012
612-492-4000 tel
612-492-3000 fax

WWW.RYANCOMPANIES.COM

PROJECT NAME
BLOCK 68 - NORTH OFFICE BUILDING

LOCATION
513 3RD STREET SOUTH
MINNEAPOLIS, MN

SCHEMATIC DESIGN SET
04/25/12

I hereby certify that this plan, specification, or report was prepared by me or under my direct supervision and that I am a duly Registered Architect under the laws of the State of Minnesota.

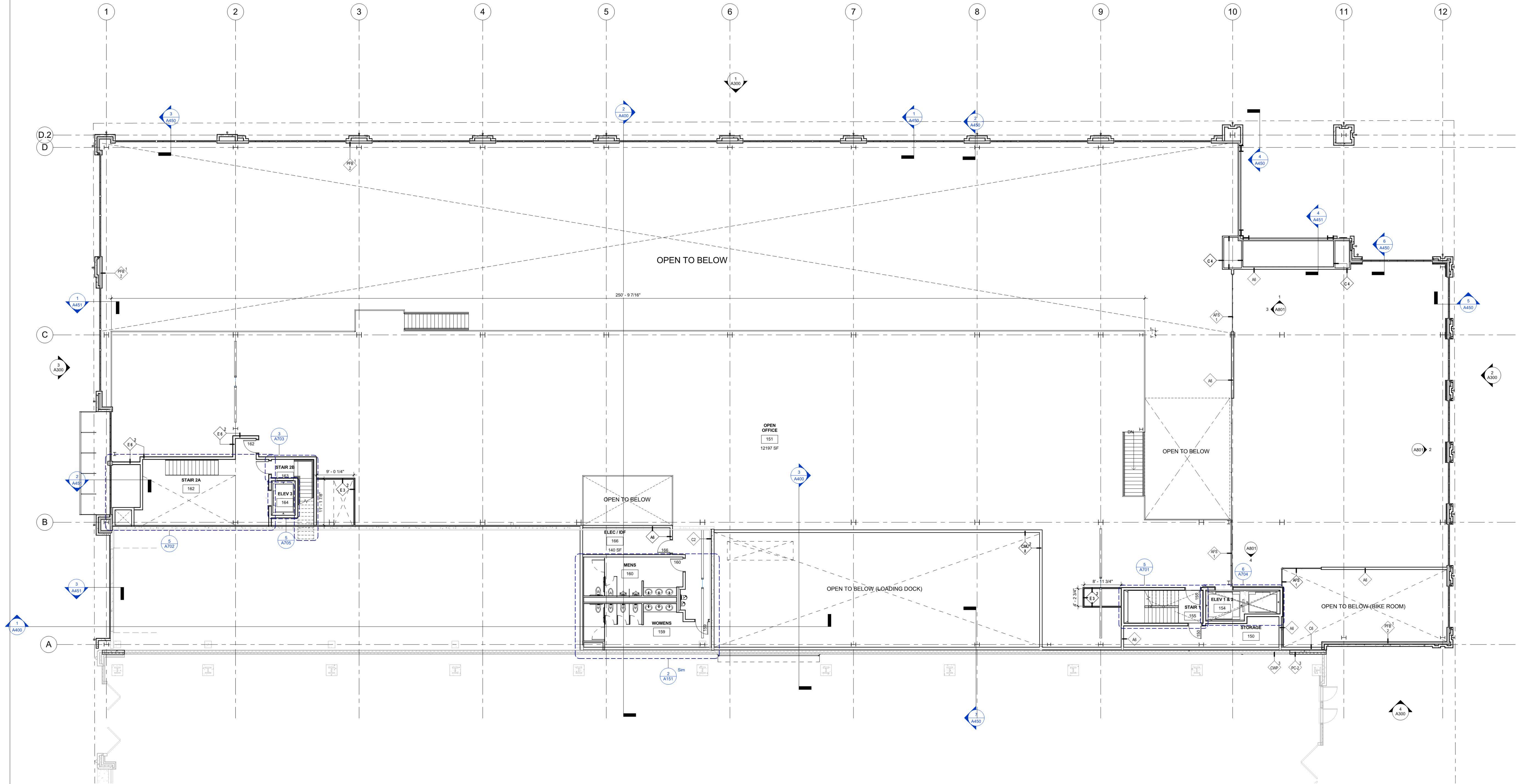
ISSUE RECORD		
REV #	DATE	DESCRIPTION

DRAWN BY
Author
CHECKED BY
Checker
JOB NO.
700-513
DATE
11.20.2015

NORTH OFFICE BUILDING
SHEET TITLE
LEVEL 1 FLOOR PLAN
SHEET NO.
B68:NO:A101

GENERAL NOTES

- REFER TO STRUCTURAL DRAWINGS FOR SLAB ON GRADE CONSTRUCTION, CONTROL AND ISOLATION JOINTS.
- COORDINATE UNDERGROUND AND UNDER SLAB UTILITIES WITH RELEVANT TRADES PRIOR TO SLAB POUR. COORDINATE ALL SLEEVES THROUGH/UNDER FOOTING AND FOUNDATION W/ STRUCTURAL ENGINEER.
- PROVIDE FIRE EXTINGUISHERS OF SIZE AND TYPE AND LOCATION AS REQUIRED BY THE FIRE MARSHALL.
- DIMENSIONS ARE TO FACE OF MASONRY OR FACE OF GYP. BD. U.N.O.
- SEE SHEET A002 FOR WALL TYPE INFORMATION.
- SEE SHEET A003 FOR PARTITION TYPE INFORMATION.
- ALL WALLS TO ROOF DECK TO BE CONSTRUCTED TO ACCOMMODATE DEFLECTION OF ROOF STRUCTURE.
- REFER TO STRUCTURAL ENGINEERING DRAWINGS FOR ADDITIONAL INFORMATION PERTAINING TO STRUCTURAL COMPONENT SIZES, LOCATIONS, CONFIGURATIONS, AND CAPACITIES.
- ALL THRESHOLDS TO BE 1/2" HIGH MAX PER ADA.
- PROVIDE MOISTURE RESISTANT GYP. BD. ON TOILET ROOM WET WALL AND ADJACENT TO JANITOR SINK.
- PROVIDE CONTROL JOINTS IN GYP. BD. AS RECOMMENDED BY MANUFACTURER.
- STAIR SUPPLIER SHALL BE RESPONSIBLE FOR CODE COMPLIANCE AND STRUCTURAL INTEGRITY FOR ALL MATERIALS FURNISHED.
- NEW PARTITIONS TO BE AS NOTED AND DESCRIBED AT WALL PARTITION TYPES.
- SUBCONTRACTOR TO VERIFY DIMENSIONS AND CONDITIONS SHOWN ON THESE DRAWINGS ANY OMISSIONS, DISCREPANCIES, OR CONFLICTS MUST BE REPORTED TO THE DESIGN BUILD IMMEDIATELY.
- DIMENSIONS ARE AT 3'-0" ABOVE FINISHED FLOOR AND FROM FACE OF FINISHED PARTITION.
- DRAWINGS SHOULD NOT BE SCALED - DIMENSIONS GOVERN. LARGE SCALE DRAWINGS GOVERN OVER SMALL SCALE DRAWINGS.
- THE TYPICAL DIMENSION FROM THE HINGE SIDE OF A DOOR OPENING TO THE FACE OF ADJACENT PERPENDICULAR WALL IS 3", UNLESS NOTED OTHERWISE.
- WHEREVER A PENETRATION OCCURS IN A FIRE-RATED ENCLOSURE SUCH AS WALLS OR SLAB, THE SPACE AROUND SUCH PENETRATION SHALL NOT EXCEED 1/2" AND SHALL BE PACKED WITH SOLID MINERAL WOOL (OR EQUAL) AND CLOSED OFF WITH A TIGHT FITTING ESCUTCHEON PLATE (OR EQUAL) ON BOTH SIDES OF THE RATED ENCLOSURE IN ORDER TO ENSURE A FULL FIRE RATING IN COMPLIANCE WITH CODE.
- ANY DOOR CLOSER SHALL BE MOUNTED ON THE TENANT SIDE OF ENTRY DOORS.
- PROVIDE ROD AND SHELF AT COAT CLOSETS.



1 1M - MEZZANINE LEVEL
A101M 1/8\" = 1'-0"



PRELIMINARY - NOT FOR CONSTRUCTION



RYAN A+E, INC.
50 South Tenth Street, Suite 300
Minneapolis, MN 55403-2012
612-492-4000 tel
612-492-3000 fax

WWW.RYANCOMPANIES.COM

PROJECT NAME
BLOCK 68 - NORTH OFFICE BUILDING
LOCATION
513 3RD STREET SOUTH
MINNEAPOLIS, MN

SCHEMATIC DESIGN SET
09/09/15

I hereby certify that this plan, specification, or report was prepared by me or under my direct supervision and that I am a duly Registered Architect under the laws of the State of Minnesota.

© 2015 RYAN A+E, INC.

ISSUE RECORD		
REV #	DATE	DESCRIPTION

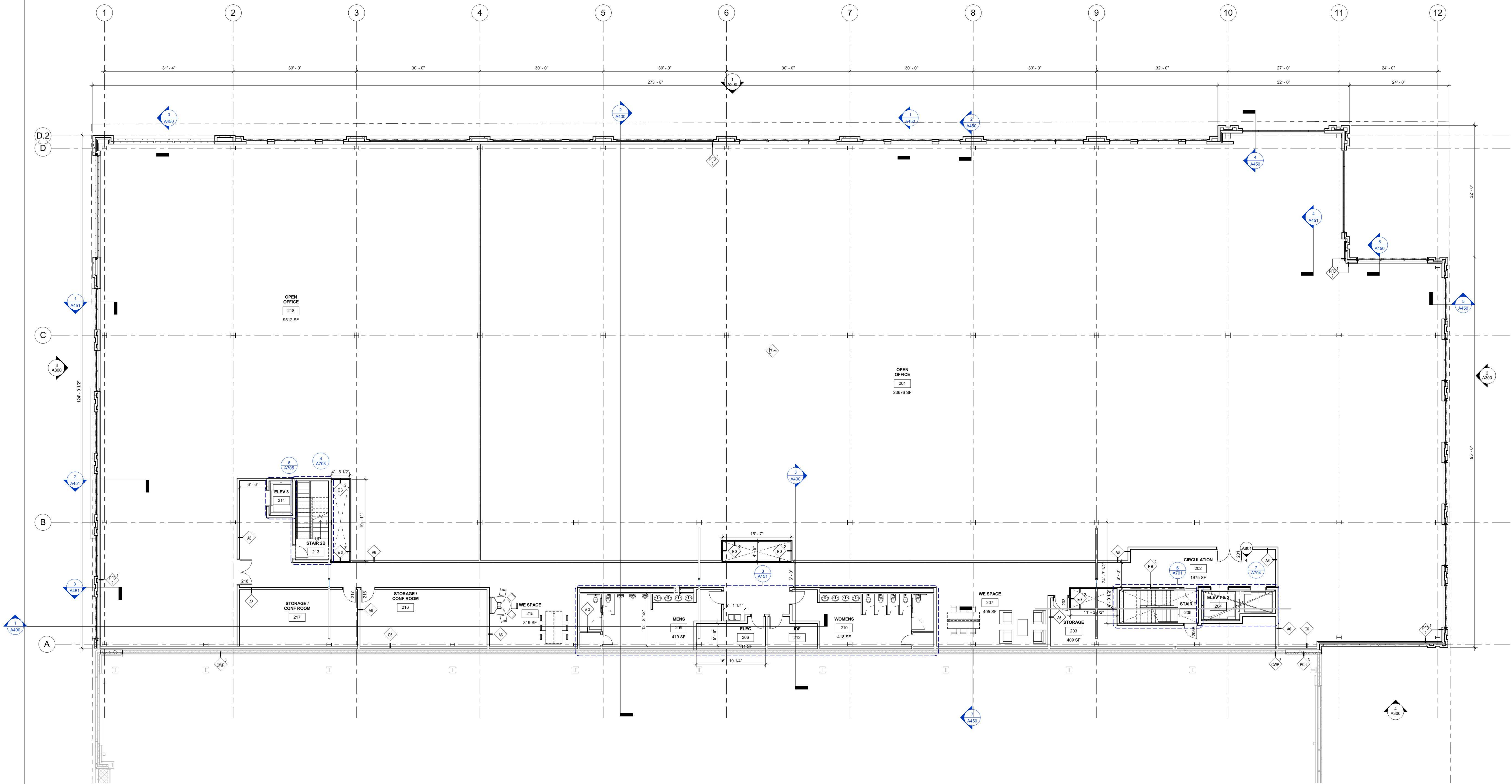
DRAWN BY
Author
CHECKED BY
Checker
JOB NO.
700-513
DATE
11.20. 2015

NORTH OFFICE BUILDING

SHEET TITLE
LEVEL 1 MEZZANINE FLOOR
PLAN
SHEET NO.
B68:NO: A101M

GENERAL NOTES

- REFER TO STRUCTURAL DRAWINGS FOR SLAB ON GRADE CONSTRUCTION, CONTROL AND ISOLATION JOINTS
- COORDINATE UNDERGROUND AND UNDER SLAB UTILITIES WITH RELEVANT TRADES PRIOR TO SLAB POUR. COORDINATE ALL SLEEVES THROUGH/UNDER FOOTING AND FOUNDATION W/ STRUCTURAL ENGINEER.
- PROVIDE FIRE EXTINGUISHERS OF SIZE AND TYPE AND LOCATION AS REQUIRED BY THE FIRE MARSHALL.
- DIMENSIONS ARE TO FACE OF MASONRY OR FACE OF GYP. BD. U.N.O.
- SEE SHEET A002 FOR WALL TYPE INFORMATION
- SEE SHEET A003 FOR PARTITION TYPE INFORMATION
- ALL WALLS TO ROOF DECK TO BE CONSTRUCTED TO ACCOMMODATE DEFLECTION OF ROOF STRUCTURE.
- REFER TO STRUCTURAL ENGINEERING DRAWINGS FOR ADDITIONAL INFORMATION PERTAINING TO STRUCTURAL COMPONENT SIZES, LOCATIONS, CONFIGURATIONS, AND CAPACITIES.
- ALL THRESHOLDS TO BE 1/2" HIGH MAX PER ADA
- PROVIDE MOISTURE RESISTANT GYP. BD. ON TOILET ROOM WET WALL AND ADJACENT TO JANITOR SINK
- PROVIDE CONTROL JOINTS IN GYP. BD. AS RECOMMENDED BY MANUFACTURER
- STAIR SUPPLIER SHALL BE RESPONSIBLE FOR CODE COMPLIANCE AND STRUCTURAL INTEGRITY FOR ALL MATERIALS FURNISHED
- NEW PARTITIONS TO BE AS NOTED AND DESCRIBED AT WALL PARTITION TYPES
- SUBCONTRACTOR TO VERIFY DIMENSIONS AND CONDITIONS SHOWN ON THESE DRAWINGS ANY OMISSIONS, DISCREPANCIES, OR CONFLICTS MUST BE REPORTED TO THE DESIGN BUILD IMMEDIATELY.
- DIMENSIONS ARE AT 3'-0" ABOVE FINISHED FLOOR AND FROM FACE OF FINISHED PARTITION.
- DRAWINGS SHOULD NOT BE SCALED - DIMENSIONS GOVERN. LARGE SCALE DRAWINGS GOVERN OVER SMALL SCALE DRAWINGS
- THE TYPICAL DIMENSION FROM THE HINGE SIDE OF A DOOR OPENING TO THE FACE OF ADJACENT PERPENDICULAR WALL IS 3", UNLESS NOTED OTHERWISE.
- WHEREVER A PENETRATION OCCURS IN A FIRE-RATED ENCLOSURE SUCH AS WALLS OR SLAB, THE SPACE AROUND SUCH PENETRATION SHALL NOT EXCEED 1/2" AND SHALL BE PACKED WITH SOLID MINERAL WOOL (OR EQUAL) AND CLOSED OFF WITH A TIGHT FITTING ESCUTCHEON PLATE (OR EQUAL) ON BOTH SIDES OF THE RATED ENCLOSURE IN ORDER TO ENSURE A FULL FIRE RATING IN COMPLIANCE WITH CODE.
- ANY DOOR CLOSER SHALL BE MOUNTED ON THE TENANT SIDE OF ENTRY DOORS.
- PROVIDE ROD AND SHELF AT COAT CLOSETS.



1 2 - LEVEL 2 PLAN
A102/ 1/8" = 1'-0"

PRELIMINARY - NOT FOR CONSTRUCTION



RYAN A+E, INC.
50 South Tenth Street, Suite 300
Minneapolis, MN 55403-2012
612-492-4000 tel
612-492-3000 fax

WWW.RYANCOMPANIES.COM

PROJECT NAME
BLOCK 68 - NORTH OFFICE BUILDING
LOCATION
513 3RD STREET SOUTH
MINNEAPOLIS, MN

SCHEMATIC DESIGN SET
08/11/15

I hereby certify that this plan, specification, or report was prepared by me or under my direct supervision and that I am a duly Registered Architect under the laws of the State of Minnesota.

© 2015 RYAN A+E, INC.

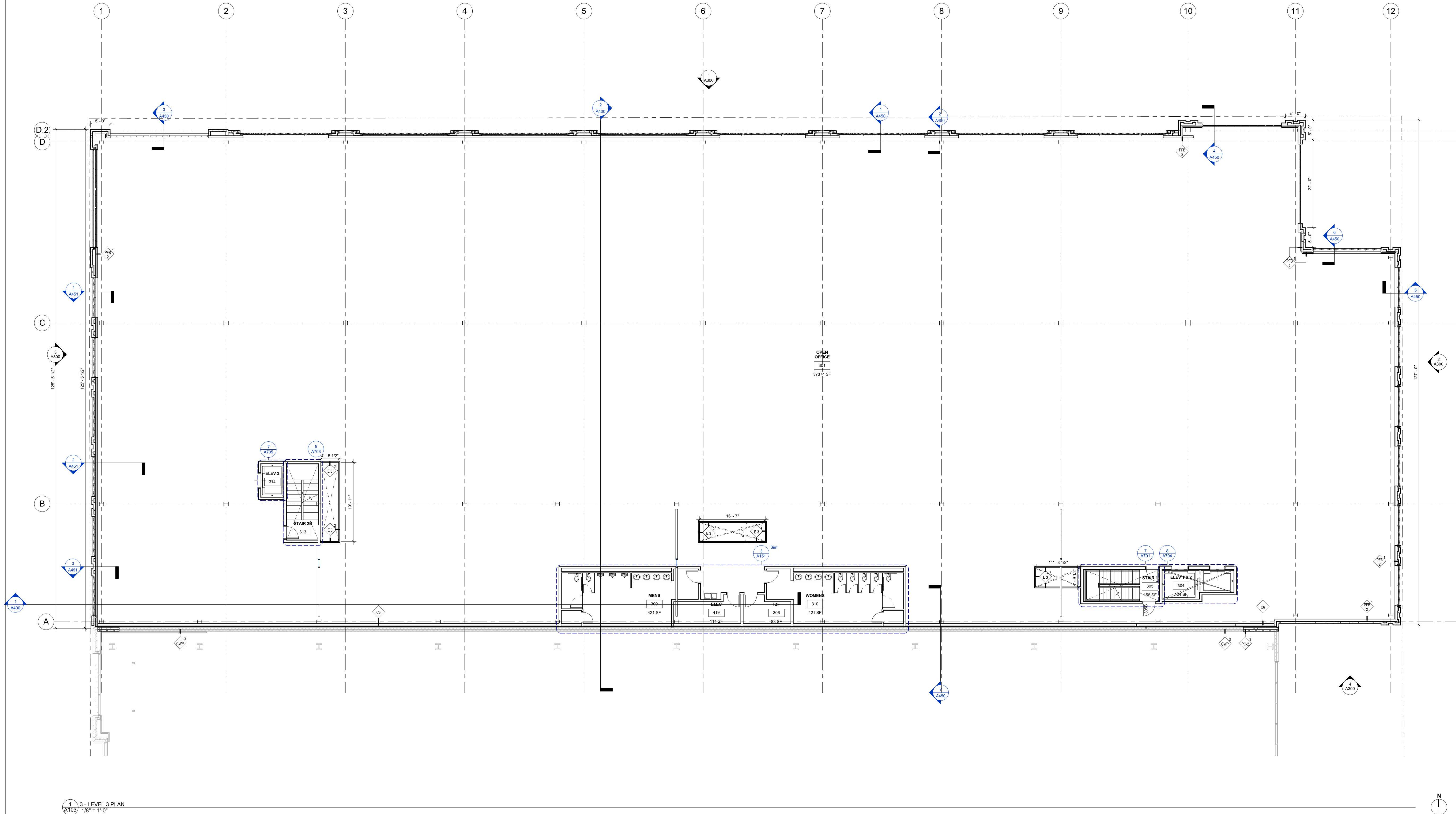
ISSUE RECORD		
REV #	DATE	DESCRIPTION

DRAWN BY
Author
CHECKED BY
Checker
JOB NO.
700-513
DATE
11.20. 2015

NORTH OFFICE BUILDING
SHEET TITLE
LEVEL 2 FLOOR PLAN
SHEET NO.
B68:NO: A102

GENERAL NOTES

- (A) REFER TO STRUCTURAL DRAWINGS FOR SLAB ON GRADE CONSTRUCTION, CONTROL AND ISOLATION JOINTS
- (B) COORDINATE UNDERGROUND AND UNDER SLAB UTILITIES WITH RELEVANT TRADES PRIOR TO SLAB POUR. COORDINATE ALL SLEEVES THROUGH/UNDER FOOTING AND FOUNDATION W/ STRUCTURAL ENGINEER.
- (C) PROVIDE FIRE EXTINGUISHERS OF SIZE AND TYPE AND LOCATION AS REQUIRED BY THE FIRE MARSHALL.
- (D) DIMENSIONS ARE TO FACE OF MASONRY OR FACE OF GYP. BD. U.N.O.
- (E) SEE SHEET A002 FOR WALL TYPE INFORMATION
- (F) SEE SHEET A003 FOR PARTITION TYPE INFORMATION
- (G) ALL WALLS TO ROOF DECK TO BE CONSTRUCTED TO ACCOMMODATE DEFLECTION OF ROOF STRUCTURE.
- (H) REFER TO STRUCTURAL ENGINEERING DRAWINGS FOR ADDITIONAL INFORMATION PERTAINING TO STRUCTURAL COMPONENT SIZES, LOCATIONS, CONFIGURATIONS, AND CAPACITIES.
- (I) ALL THRESHOLDS TO BE 1/2" HIGH MAX PER ADA
- (J) PROVIDE MOISTURE RESISTANT GYP. BD. ON TOILET ROOM WET WALL AND ADJACENT TO JANITOR SINK
- (K) PROVIDE CONTROL JOINTS IN GYP. BD. AS RECOMMENDED BY MANUFACTURER
- (L) STAIR SUPPLIER SHALL BE RESPONSIBLE FOR CODE COMPLIANCE AND STRUCTURAL INTEGRITY FOR ALL MATERIALS FURNISHED
- (M) NEW PARTITIONS TO BE AS NOTED AND DESCRIBED AT WALL PARTITION TYPES
- (N) SUBCONTRACTOR TO VERIFY DIMENSIONS AND CONDITIONS SHOWN ON THESE DRAWINGS ANY OMISSIONS, DISCREPANCIES, OR CONFLICTS MUST BE REPORTED TO THE DESIGN BUILD IMMEDIATELY.
- (O) DIMENSIONS ARE AT 5'-0" ABOVE FINISHED FLOOR AND FROM FACE OF FINISHED PARTITION.
- (P) DRAWINGS SHOULD NOT BE SCALED - DIMENSIONS GOVERN. LARGE SCALE DRAWINGS GOVERN OVER SMALL SCALE DRAWINGS
- (Q) THE TYPICAL DIMENSION FROM THE HINGE SIDE OF A DOOR OPENING TO THE FACE OF ADJACENT PERPENDICULAR WALL IS 3", UNLESS NOTED OTHERWISE.
- (R) WHEREVER A PENETRATION OCCURS IN A FIRE-RATED ENCLOSURE SUCH AS WALLS OR SLAB, THE SPACE AROUND SUCH PENETRATION SHALL NOT EXCEED 1/2" AND SHALL BE PACKED WITH SOLID MINERAL WOOL (OR EQUAL) AND CLOSED OFF WITH A TIGHT FITTING ESCUTCHEON PLATE (OR EQUAL) ON BOTH SIDES OF THE RATED ENCLOSURE IN ORDER TO ENSURE A FULL FIRE RATING IN COMPLIANCE WITH CODE.
- (S) ANY DOOR CLOSER SHALL BE MOUNTED ON THE TENANT SIDE OF ENTRY DOORS
- (T) PROVIDE ROD AND SHELF AT COAT CLOSETS.



1 3 - LEVEL 3 PLAN
A103 1/8" = 1'-0"

PRELIMINARY - NOT FOR CONSTRUCTION



RYAN A+E, INC.
50 South Tenth Street, Suite 300
Minneapolis, MN 55403-2012
612-492-4000 tel
612-492-3000 fax

WWW.RYANCOMPANIES.COM

PROJECT NAME

BLOCK 68 - NORTH OFFICE BUILDING

LOCATION
513 3RD STREET SOUTH
MINNEAPOLIS, MN

SCHEMATIC DESIGN SET

09/10/15

I hereby certify that this plan, specification, or report was prepared by me or under my direct supervision and that I am a duly Registered Architect under the laws of the State of Minnesota.

ISSUE RECORD

REV #	DATE	DESCRIPTION
-------	------	-------------

DRAWN BY

Author

CHECKED BY

Checker

JOB NO.

700-513

DATE

11.20. 2015

NORTH OFFICE BUILDING

SHEET TITLE

LEVEL 3 FLOOR PLAN

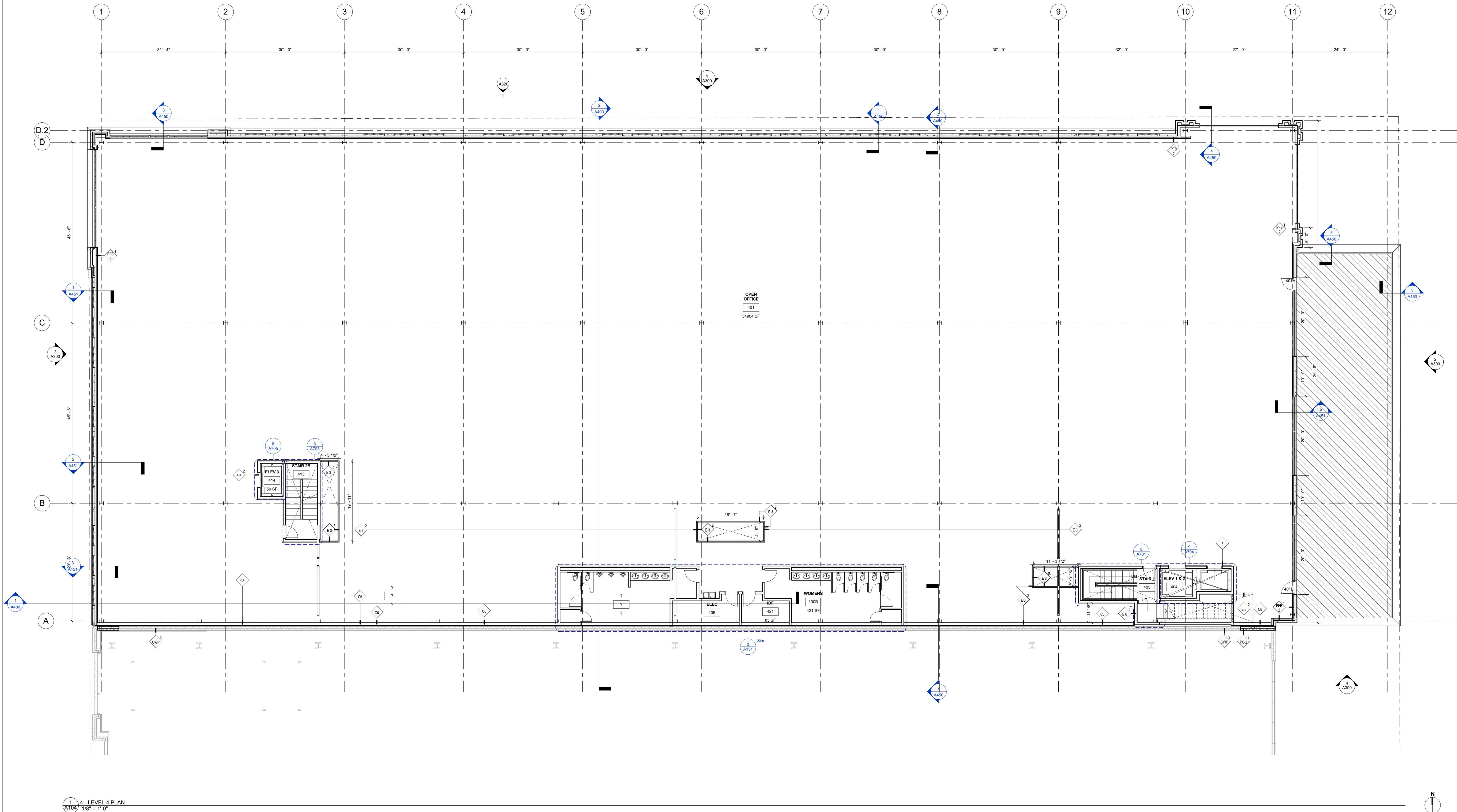
SHEET NO.

B68:NO:A103

© 2015 RYAN A+E, INC.

GENERAL NOTES

- (A) REFER TO STRUCTURAL DRAWINGS FOR SLAB ON GRADE CONSTRUCTION, CONTROL AND ISOLATION JOINTS
- (B) COORDINATE UNDERGROUND AND UNDER SLAB UTILITIES WITH RELEVANT TRADES PRIOR TO SLAB POUR. COORDINATE ALL SLEEVES THROUGH/UNDER ENGINEER
- (C) PROVIDE FIRE EXTINGUISHERS OF SIZE AND TYPE AND LOCATION AS REQUIRED BY THE FIRE MARSHALL
- (D) DIMENSIONS ARE TO FACE OF MASONRY OR FACE OF GYP. BD. U.N.O.
- (E) SEE SHEET A002 FOR WALL TYPE INFORMATION
- (F) SEE SHEET A003 FOR PARTITION TYPE INFORMATION
- (G) ALL WALLS TO ROOF DECK TO BE CONSTRUCTED TO ACCOMMODATE DEFLECTION OF ROOF STRUCTURE
- (H) REFER TO STRUCTURAL ENGINEERING DRAWINGS FOR ADDITIONAL INFORMATION PERTAINING TO STRUCTURAL COMPONENT SIZES, LOCATIONS, CONFIGURATIONS, AND CAPACITIES
- (I) ALL THRESHOLDS TO BE 1/2" HIGH MAX PER ADA
- (J) PROVIDE MOISTURE RESISTANT GYP. BD. ON TOILET ROOM WET WALL AND ADJACENT TO JANITOR SINK
- (K) PROVIDE CONTROL JOINTS IN GYP. BD. AS RECOMMENDED BY MANUFACTURER
- (L) STAIR SUPPLIER SHALL BE RESPONSIBLE FOR CODE COMPLIANCE AND STRUCTURAL INTEGRITY FOR ALL MATERIALS FURNISHED
- (M) NEW PARTITIONS TO BE AS NOTED AND DESCRIBED AT WALL PARTITION TYPES
- (N) SUBCONTRACTOR TO VERIFY DIMENSIONS AND CONDITIONS SHOWN ON THESE DRAWINGS ANY OMISSIONS, DISCREPANCIES, OR CONFLICTS MUST BE REPORTED TO THE DESIGN BUILD IMMEDIATELY
- (O) DIMENSIONS ARE AT 3'-0" ABOVE FINISHED FLOOR AND FROM FACE OF FINISHED PARTITION
- (P) DRAWINGS SHOULD NOT BE SCALED - DIMENSIONS GOVERN. LARGE SCALE DRAWINGS GOVERN OVER SMALL SCALE DRAWINGS
- (Q) THE TYPICAL DIMENSION FROM THE HINGE SIDE OF A DOOR OPENING TO THE FACE OF ADJACENT PERPENDICULAR WALL IS 3", UNLESS NOTED OTHERWISE
- (R) WHEREVER A PENETRATION OCCURS IN A FIRE-RATED ENCLOSURE SUCH AS WALLS OR SLAB, THE SPACE AROUND SUCH PENETRATION SHALL NOT EXCEED 1/2" AND SHALL BE PACKED WITH SOLID MINERAL WOOL (OR EQUAL) AND CLOSED OFF WITH A TIGHT FITTING ESCUTCHEON PLATE (OR EQUAL) ON BOTH SIDES OF THE RATED ENCLOSURE IN ORDER TO ENSURE A FULL FIRE RATING IN COMPLIANCE WITH CODE
- (S) ANY DOOR CLOSER SHALL BE MOUNTED ON THE TENANT SIDE OF ENTRY DOORS
- (T) PROVIDE ROD AND SHELF AT COAT CLOSETS



1 4-LEVEL 4 PLAN
A104 1/8" = 1'-0"

PRELIMINARY - NOT FOR CONSTRUCTION



RYAN A+E, INC.
50 South Tenth Street, Suite 300
Minneapolis, MN 55403-2012
612-492-4000 tel
612-492-3000 fax

WWW.RYANCOMPANIES.COM

PROJECT NAME

BLOCK 68 - NORTH OFFICE BUILDING

LOCATION
513 3RD STREET SOUTH
MINNEAPOLIS, MN

SCHEMATIC DESIGN SET

09/10/15

I hereby certify that this plan, specification, or report was prepared by me or under my direct supervision and that I am a duly Registered Architect under the laws of the State of Minnesota

© 2015 RYAN A+E, INC.

ISSUE RECORD

REV #	DATE	DESCRIPTION
-------	------	-------------

DRAWN BY

Author

CHECKED BY

Checker

JOB NO.

700-513

DATE

11.20. 2015

NORTH OFFICE BUILDING

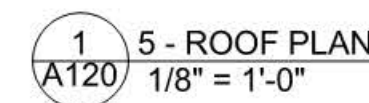
SHEET TITLE

LEVEL 4 FLOOR PLAN

SHEET NO.

B68:NO: A104

- ① ROOF DRAIN
- ② SECONDARY ROOF DRAIN
- ③ TAPERED INSULATION CRICKET



WWW.RYANCOMPANIES.COM

04/25/12

© 2015, BRYAN A+E INC.

SHEET NO.
B68:NO:A120